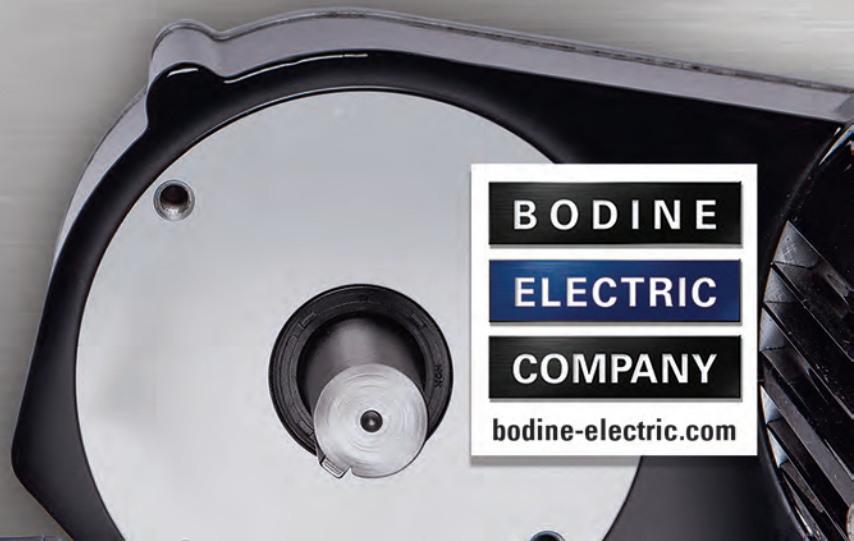
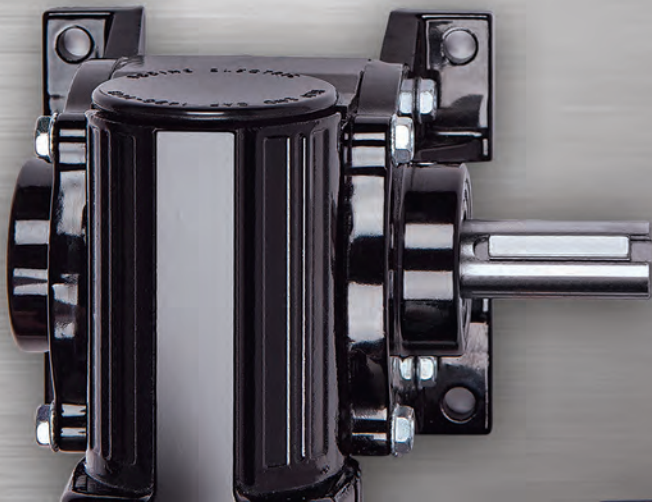
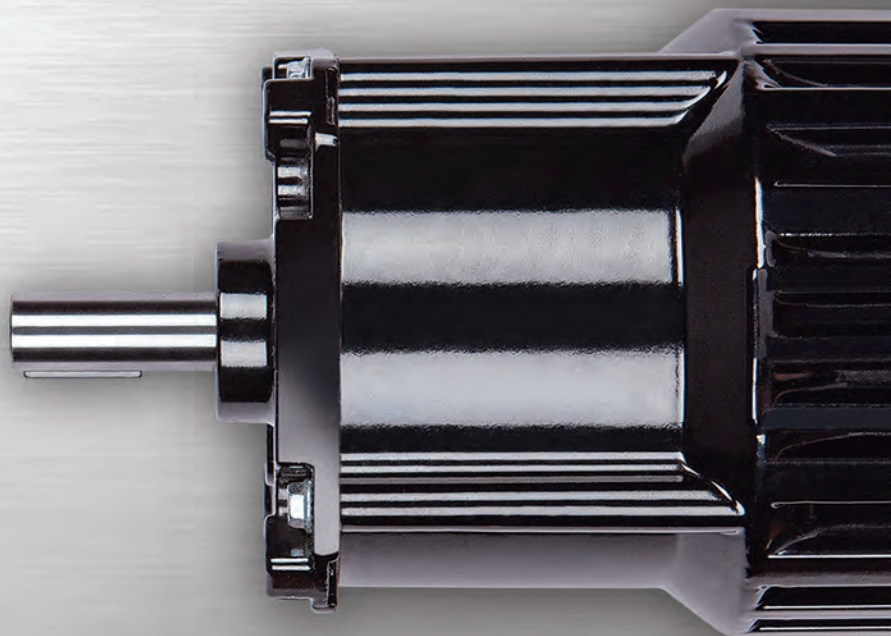


STANDARD PRODUCTS

METRIC GEARMOTORS AND MOTORS

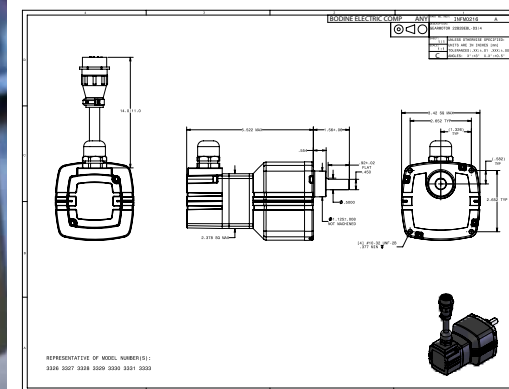
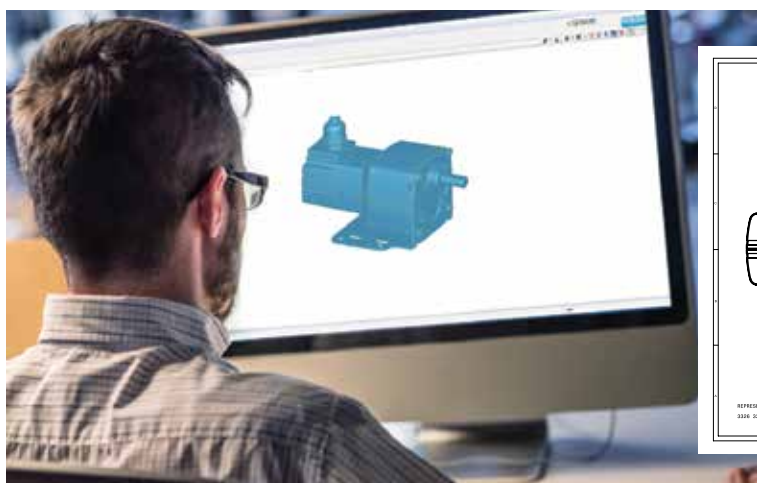
AC
PMDC
BLDC



**BODINE
ELECTRIC
COMPANY**
bodine-electric.com

For 2D/3D CAD drawings and distributor locations, go to www.bodine-electric.com

Our website features the latest product specifications, technical documents, connection diagrams and instruction manuals. Dimension drawings and 3D models can be imported from the website directly into most CAD software programs. You will also find information about Bodine's newest products, our distributor locator, and helpful Tech Tools designed to answer the most commonly asked motion control questions.



UL/CSA Safety Compliance

Products are marked cURus or UR/CSA, and most products meet CE. All products are also



RoHS compliant.

Motors and gearmotors

conform to UL standard 1004 and CSA standard C22.2 No. 100. They are documented in UL file number E47177 and CSA file number LR2797.

Electronic controls conform to UL standard 508 and CSA standard C22.2 No. 14. They are documented in UL file number E44529 and CSA file number LR26397.

Motor Options

For the comparative advantages of AC motors and gearmotors, see page 21.

Variable speed

Pacesetter AC motors

- Voltage ratings are 230 VAC, 60 Hz (3-phase) or 230/460 VAC, 60 Hz (3-phase)

Fixed-speed AC motors

- Voltage ratings are 115 VAC, 60 Hz (single-phase) or 230 VAC, 60 Hz (3-phase)
- Metric voltage ratings are 230 VAC, 50 Hz (1- or 3-phase)

Permanent Magnet DC motors

- Voltage ratings are 12/24 VDC, 24 VDC, 90/130 VDC or 130 VDC
- Metric voltage rating is 180 VDC
- Compatible with 90 V controls (90/130 VDC and 130 VDC only)

Brushless DC (ECM) motors

- Voltage ratings are 24 or 130 VDC

	Variable Speed Pacesetter Inverter Duty AC				Fixed-Speed AC				Permanent Magnet DC			Brushless DC		INTEGRA BLDC		
	30R	34R	42R	48R	K-2	30R	34R	42R	48R	24A	33A	42A	22B	34B	22B	34B
Power (HP)	1/25-1/17	1/8-1/4	3/8	1/3-3/4	1/1600- 1/200	1/40-1/30	1/15-1/5	1/12-1/4	1/5-1/2	1/50-1/7	1/16-1/3	1/4-1/2	1/16-1/5	1/5-3/8	1/16-1/8	1/4
Torque (oz-in.)	24-35	70-148	222	185-445	0.35-3.2	10-20	38-119	48-148	112-296	8-24	34-134	101-180	20-50	33-151	25-50	100
Rated Speed (rpm)	1700	1700, 1800	1700	1700, 1800	1200, 1550, 1800, 3600	1700, 1800, 3400	1700, 1800, 3400	1700, 3450	1700, 1800	2500, 11,500	2500	2500	2500, 10,000	2500, 10,000	2500	2500

© Copyright 2017. Catalog data subject to change without notice. All rights reserved. Printed in the U.S.A.

Table of Contents

Gearmotors

TORQUE

Inline and Parallel Shaft

	GEARHEAD	SPECIFICATIONS	DIMENSIONS
up to 226 lb-in.	Type 60P	4	36
up to 40 lb-in.	Type D	5	36
up to 120 lb-in.	Type Z	6	36
up to 210 lb-in.	Type WX	7	36
up to 350 lb-in.	Type FX	8	36
up to 350 lb-in.	Type E/F/FX	9	36
up to 1,000 lb-in.	Type HG	10	37
up to 1,000 lb-in.	Type CG	10	37
up to 120 oz-in.	Type A/T (K-2)	11	37



Right Angle

up to 37 lb-in.	Type 3N/3F	12	38
up to 77 lb-in.	Type 5R/5L	13	38
up to 121 lb-in.	Type 5N	14	39
up to 121 lb-in.	Type 5F	15	39
up to 148 lb-in.	Type 3RD	16	39
up to 296 lb-in.	Type 5H	16	39
up to 380 lb-in.	Type GB	17	39
	Hollow Shaft		40

Motors Without Gearing

MOTOR TYPE

	POWER	SPECIFICATIONS	DIMENSIONS
Torque Motors	from 3.5 to 68 oz-in.	18	42
Variable Speed—AC Pacesetter			
Inverter Duty	from 1/25 to 3/4 HP	19	42
Fixed Speed—AC Induction	up to 1/2 HP	20	42
Permanent Magnet DC	up to 1/2 HP	22	42
Brushless DC	up to 1/2 HP	23	42
Direct Drive Brushless DC e-TORQ ...	up to 3.5 HP	23	43



Motor Speed Controls

Pacesetter AC Inverters (for 230VAC Motors)	24	43
DC Motor Speed Controls (for 12/24 and 90/130V Motors)	25	43
Brushless DC Controls (for 12/24V and 130V Motors)	28	43



2 Year
system warranty

Accessories 34

Reference Drawings and Dimensions 36-43

Metric Motors and Gearmotors

Metric Inline/Planetary

up to 36 Nm	Type 60P	4
-------------------	-----------------------	---

Metric Parallel Shaft

up to 0.67 Nm	Type A/T (K-2)	29
up to 11.3 Nm	Type D	29
up to 11.3 Nm	Type Z	30
up to 19.8 Nm	Type W	30
up to 35.0 Nm	Type E/F	31

Metric Right Angle

up to 16.7 Nm	Type 3F	31
up to 10.5 Nm	Type 5N/5F	32
up to 14.2 Nm	Type 5H	32
up to 43.0 Nm	Type GB	33

Metric Motors without Gearing

up to 140 Watts	Fixed Speed—AC Induction ...	33
up to 112 Watts	Permanent Magnet DC	33



Reference

Hollow Shaft Gearmotor Benefits ...	17
Safe Operating Torque and Speed Area	19
Common Abbreviations	20
Comparative Advantages of AC Motors and Gearmotors	21
Speed Regulation of Permanent Magnet DC Motors	22



Metric Motors and Gearmotors

Our metric gearmotors and motors feature metric shafts and mounting configurations. AC metric motors are rated at 230 VAC / 50 Hz. Permanent magnet DC motors are available with voltage ratings of 180 VDC. Custom windings can be provided to match almost any international rating. We also offer a complete line of both AC and DC metric right angle and parallel shaft gearmotors.

Parallel Shaft Gearmotors—Metric

up to 0.67 Nm | Parallel Shaft Gearmotors—Metric

A/T

- Metric mounting threads and shaft dimensions
- Three-wire winding simplifies reversing
- Impedance protected to prevent current overload (gearmotor should not be stalled when powered up)
- See page 34 for capacitors

Fixed Speed—AC Gearmotors

Speed (rpm)	Rated Torque		Power		Rated Voltage	Freq. (Hz)	Ph	Current (Amps)	Gear Ratio	Radial Load (oz.)	Capacitor (μF/VAC)	Product Type	Model Number
	oz-in.	Nm	HP	Watts									
7	95	0.67	1/300	2.8	230	50	1	0.06	180	20	0.4/440	KCI-26T4	N1757
42	75	0.53							30			KCI-26A2	N1754
69	45	0.31							18			KCI-26A2	N1753
210	15	0.11							6			KCI-26A2	N1752

CAPACITOR IS REQUIRED



Type K-2A/T

up to 4.5 Nm | Parallel Shaft Gearmotors—Metric

D

- Metric mounting threads and shaft dimensions
- Unvented gearhousing for universal horizontal mounting
- Helical primary gear for quietness and hardened steel spur gearing on subsequent stages for high output torque and long life
- See pages 34 and 35 for capacitors and accessories

Fixed Speed—AC Gearmotors

Speed (rpm)	Rated Torque		Power		Rated Voltage	Freq. (Hz)	Ph	Current (Amps)	Gear Ratio	Radial Load (lbs.)	Capacitor (μF/VAC)	Product Type	Model Number
	lb-in.	Nm	HP	Watts									
7.8	40	4.5	1/48	15	230	50	1	0.17	180	65	1.3/440	30R1BECI-D4	N1562
23	40	4.5	1/41	18				0.21	60			30R2BECI-D3	N1574
47	24	2.7	1/41	18				0.21	30			30R2BECI-D3	N1573
78	14	1.6	1/41	18				0.21	18			30R2BECI-D3	N1572
117	9.7	1.1	1/41	18				0.21	12			30R2BECI-D3	N1571

CAPACITOR IS REQUIRED



Type 30R-D

Permanent Magnet DC Gearmotors

Speed (rpm)	Rated Torque		Power		Rated Voltage	Current (Amps)	Gear Ratio	Radial Load (lbs.)	Product Type	Model Number
	lb-in.	Nm	HP	Watts						
5.8	40	4.5	1/49	15	180	0.13	300	65	24A2BEPD-D5	N1398
9.6	40	4.5	1/49	15		0.13	180		24A2BEPD-D4	N1397
29	40	4.1	1/32	23		0.18	60		24A4BEPD-D3	N1395
58	18	2.0	1/32	23		0.18	30		24A4BEPD-D3	N1394
144	7.3	0.8	1/32	23		0.18	12		24A4BEPD-D3	N1392



Type 24A-D

"N" model numbers require lead time and minimum quantities.

Visit www.bodine-electric.com for 2D/3D CAD drawings

Metric—Parallel Shaft Gearmotors | up to 11.3 Nm

- Metric mounting threads and shaft dimensions
- Aluminum center ring and endshields
- Unvented gearhousing
- Industrial lip type seals on motor and output shafts
- Needle bearings on output shaft
- Permanently lubricated with high-performance lubricant
- Helical pinion accurately cut on motor shaft for maximum strength and minimum noise
- 34R-Z: die cast terminal box with terminal block included
- See page 34 for capacitors

Fixed Speed—AC Gearmotors



Type 34R-Z

Speed (rpm)	Rated Torque		Power		Rated Voltage	Freq. (Hz)	Ph	Current (Amps)	Gear Ratio	Radial Load (lbs.)	Capacitor (μF/VAC)	Product Type	Model Number
	lb-in.	Nm	HP	Watts									
Permanent Split Capacitor, Non-synchronous (TEFC) CAPACITOR IS REQUIRED													
7.8	100	11.3	1/15	50	230	50	1	0.48	180	125	5.0/370	34R4BFCI-Z4	N1449
23	100	11.3						0.5	60	125		34R4BFCI-Z3	N1455
70	40	4.5						0.5	20	100		34R4BFCI-Z2	N1453
233	15	1.7						0.5	6	100		34R4BFCI-Z2	N1451

Permanent Magnet DC Gearmotors



Type 24A-Z



Type 33A-Z

Speed (rpm)	Rated Torque		Power		Rated Voltage	Current (Amps)	Gear Ratio	Radial Load (lbs.)	Product Type	Model Number
	lb-in.	Nm	HP	Watts						
24A-Z PMDC Gearmotor										
9.6	100	11.3	1/32	23	180	0.18	180	125	24A4BEPM-Z4	N1163
29	36	4.1					60	125	24A4BEPM-Z3	N1161
58	18	2.0					30	125	24A4BEPM-Z3	N1160
288	4	0.44					6	100	24A4BEPM-Z2	N1157
33A-Z PMDC Gearmotor										
29	69	7.8	1/23	32	180	0.33	60	125	33A3BEPM-Z3	N6269
58	35	3.9					30	125	33A3BEPM-Z3	N6268
144	15	1.7					12	100	33A3BEPM-Z2	N6266

Metric—Parallel Shaft Gearmotors | up to 19.8 Nm

- Metric mounting threads and shaft dimensions
- Lubricated for life
- Synthetic lubricant improves performance, and allows these gearmotors to operate in a wide temperature range
- Models with accessory shafts are ideal for mounting encoders or brakes
- 34R-W: Die cast terminal box with terminal block included
- Adaptor plate, model 0995, allows for 3-hole mounting configuration. See page 34.

Fixed Speed—AC Gearmotors



Type 34R-W

Speed (rpm)	Rated Torque		Power		Rated Voltage	Freq. (Hz)	Ph	Current (Amps)	Gear Ratio	Radial Load (lbs.)	Capacitor (μF/VAC)	Product Type	Model Number
	lb-in.	Nm	HP	Watts									
Permanent Split Capacitor, Non-synchronous CAPACITOR IS REQUIRED													
4.5	175	19.8	1/10	75	230	50	1	0.6	312.4	130	7.5/370	34R6BFCI-W4	N1477
21	146	16.5							65.5	130		34R6BFCI-W3	N1484
69	53	6							20.4	65		34R6BFCI-W2	N1481
255	14	1.6							5.5	65		34R6BFCI-W2	N1478

Permanent Magnet DC Gearmotors



Type 33A-W

Speed (rpm)	Rated Torque		Power		Rated Voltage	Current (Amps)	Gear Ratio	Radial Load (lbs.)	Product Type	Model Number
	lb-in.	Nm	HP	Watts						
5.5	175	19.8	1/23	32	180	0.33	312.4	130	33A3BEPM-W4	N6247
18	151	17.0	1/14	54		0.41	97.5	130	33A5BEPM-W4	N6256
39	78	8.8	1/14			0.41	43.9	130	33A5BEPM-W3	N6254
85	39	4.4	1/14			0.41	20.4	65	33A5BEPM-W2	N6252
125	27	3.0	1/14			0.41	13.8	65	33A5BEPM-W2	N6251
315	11	1.2	1/14			0.41	5.48	65	33A5BEPM-W2	N6249

"N" model numbers require lead time and minimum quantities.

Control models 1865 (see page 25) and 0865, 0866 (see page 27) are available for metric gearmotors and motors.

- Metric mounting threads and shaft dimensions
- Unvented gearhousing
- All steel gearing
- Industrial lip type seals on motor and output shafts
- Needle bearings throughout for increased radial load capacity and long life
- Permanently lubricated
- 42R-E: Die cast terminal box with terminal block included
- *F-type only*: Hardened helical gearing for quietness and high output to size ratio
- Dual voltage (230/460V) models are also available

Fixed Speed—AC Gearmotors

Speed (rpm)	Rated Torque		Power		Rated Voltage	Freq. (Hz)	Ph	Current (Amps)	Gear Ratio	Radial Load (lbs.)	Capacitor (µF/VAC)	Product Type	Model Number
	lb-in.	Nm	HP	Watts									
Three-phase, Non-synchronous													
140	50	5.7	1/5	140	230	50	1	1.1/61	10	300		42R5BFPP-E2	N1665
Permanent Split Capacitor, Non-synchronous													
CAPACITOR IS REQUIRED													
4.7	310	35	1/7.5	100	230	50	1	0.78	300	200	7.5/370	42R5BFCI-E4	N1671
7.8	341	38.5							180	200		42R5BFCI-E4	N1669
23	297	33.6							60	200		42R5BFCI-E3	N1685
47	148	16.7							30	300		42R5BFCI-E3	N1683
70	99	11.2							20	300		42R5BFCI-E3	N1681
140	50	5.6							10	300		42R5BFCI-E2	N1680
280	26	2.9							5	300		42R5BFCI-E1	N1679
Split phase Non-synchronous (with centrifugal switch)													
47	148	16.7	1/7.5	100	230	50	1	0.78	30	300		42R5BFSI-E3	N1653



Type 42R-E

Permanent Magnet DC Gearmotors

Speed (rpm)	Rated Torque		Power		Rated Voltage	Current (Amps)	Gear Ratio	Radial Load (lbs.)	Product Type	Model Number
	lb-in.	Nm	HP	Watts						
5.8	310	35	1/5	153	180	0.85	300	200	42A5BEPM-E4	N4275
29	310	35				1	60	200	42A7BEPM-E3	N4285
43	180	20				1	40	200	42A7BEPM-E3	N4284
85	120	13.6				1	20	300	42A7BEPM-E3	N4282
170	60	6.8				1	10	300	42A7BEPM-E2	N4280
170	68	7.7				1	10	300	42A7BEPM-F2	N4290
345	32	3.7				1	5	300	42A7BEPM-E1	N4279



Type 42A-E/F

up to 16.7 Nm | Right Angle Gearmotors—Metric

- Metric mounting threads and shaft dimensions
- Industrial lip seals on motor and output shafts
- Needle bearings on output shaft for increased radial load capacity and long life
- Permanently lubricated with high-performance lubricant
- Bronze gear for high shock load capability
- Hardened and ground worm for high strength and long life
- 34R-3F: Die cast terminal box with terminal block included

Fixed Speed—AC Gearmotors

Speed (rpm)	Rated Torque		Power		Rated Voltage	Freq. (Hz)	Ph	Current (Amps)	Gear Ratio	Radial Load (lbs.)	Capacitor (μF/VAC)	Product Type	Model Number
	lb-in.	Nm	HP	Watts									
Permanent Split Capacitor, Non-synchronous													
35	37	16.7	1/15	50	230	50	1	0.5	40	40	7.5/370	34R4BFCI-3F	N1491
47	34	4.2							30	40			N1487
70	30	3.8							20	40			N1490
140	19	2.1							10	5			N1488



Type 34R-3F

Permanent Magnet DC Gearmotors

Speed (rpm)	Rated Torque		Power		Rated Voltage	Current (Amps)	Gear Ratio	Radial Load (lbs.)	Product Type	Model Number
	lb-in.	Nm	HP	Watts						
43	16	1.8	1/32	23	180	0.18	40	40	24A4BEPM-3F	N1098
86	9.7	1.1					20			N1096
172	5.3	0.6					10			N1094



Type 24A-3F

"N" model numbers require lead time and minimum quantities.

Metric—Right Angle Gearmotors

5N/5F

Metric—Right Angle Gearmotors | up to 12.8 Nm

- Metric mounting threads and shaft dimensions
- Unvented gearhousing for universal horizontal mounting
- Bronze worm gear for high shock load capability
- Hardened and ground worm for strength and long life
- Models with accessory shafts are ideal for mounting encoders or brakes
- *AC Gearmotors:* Die cast terminal box with terminal block included
- See pages 34 and 35 for capacitors and terminal boxes

Fixed Speed—AC Gearmotors



Type 34R-5F



Type 42R-5F and 42R-5N

Speed (rpm)	Rated Torque		Power		Rated Voltage	Freq. (Hz)	Ph	Current (Amps)	Gear Ratio	Radial Load (lbs.)	Capacitor (μF/VAC)	Product Type	Model Number
lb-in.	Nm	HP	Watts										
34R-5F Gearmotor													
<i>Permanent Split Capacitor, Non-synchronous</i>													
23	72	8.1	1/15						60	50			N1469
35	60	6.8	1/15						40	50			N1468
70	39	4.4	1/15						20	50			N1466
140	21	2.4	1/15						10	30			N1465
42R-5F Gearmotor													
<i>Permanent Split Capacitor, Non-synchronous</i>													
35	93	10.5	1/9						40	80			N1627
70	60	6.8	1/9						20	80			N1624
140	32	3.6	1/9						10	10			N1623
42R-5N Gearmotor													
<i>Three-phase, Non-synchronous</i>													
47	109	12.3	1/5	140	230/400	50	3	1/1.61	30	180	—	42R5BFPP-5N	N1633
<i>Permanent Split Capacitor, Non-synchronous</i>													
35	113	12.8							40				N1678
70	74	8.4	1/7.5	100	230	50	1	0.78	20	180	7.5/370	42R5BFCI-5N	N1677

Permanent Magnet DC Gearmotors



Type 33A-5F



Type 42A-5N

Speed (rpm)	Rated Torque		Power		Peak Torque (lb-in.)	Rated Voltage	Current (Amps)	Gear Ratio	Radial Load (lbs.)	Product Type	Model Number
lb-in.	Nm	HP	Watts								
33A-5F Gearmotor											
43	45	5.1			118			40			N6244
86	29	3.3			100			20			N6242
173	17	1.9			54	180	0.41	10	80	33A5BEPM-5F	N6241
345	8.9	1			28			5			N6240
42A-5N Gearmotor											
43	81	9.1						40			N4238
85	55	6.2						20			N4236
172	31	3.5	1/6	121	177	180	0.85	10	120	42A5BEPM-5N	N4235

5H

Metric—Right Angle Gearmotors | up to 14.2 Nm

Permanent Magnet DC Gearmotors



Type 42A-5H

Speed (rpm)	Rated Torque		Power		Peak Torque (lb-in.)	Rated Voltage	Current (Amps)	Gear Ratio	Radial Load (lbs.)	Product Type	Model Number
lb-in.	Nm	HP	Watts								
36	126	14.2			340	180	1	48	150	42A7BEPM-5H	N4299
96	81	9.2	1/5	141	247			18			N4296

"N" model numbers require lead time and minimum quantities.

- Metric mounting threads and shaft dimensions
- Unvented gearhousing for universal horizontal mounting
- Hardened helical output gearing
- Bronze worm gear for high shock load capability
- Hardened and ground worm hobbled on the motor shaft for high strength and long life
- Models with accessory shafts are ideal for mounting encoders or brakes
- See pages 34 and 35 for capacitors and terminal boxes
- 42R-GB: Die cast terminal box with terminal block included

Fixed Speed—AC Gearmotors

Speed (rpm)	Rated Torque		Power		Rated Voltage	Freq. (Hz)	Ph	Current (Amps)	Gear Ratio	Radial Load (lbs.)	Capacitor (μF/VAC)	Product Type	Model Number
	lb-in.	Nm	HP	Watts									
5	380	43	1/7.5	100	230	50	1	0.78	280	200	7.5/370	42R5BFCI-GB	N1266
7.4	375	42							190				N1264
12	290	33							120				N1262
23	204	23							60				N1260



Type 42R-GB

Permanent Magnet DC Gearmotors

Speed (rpm)	Rated Torque		Power		Rated Voltage	Current (Amps)	FF	Gear Ratio	Radial Load (lbs.)	Product Type	Model Number
	lb-in.	Nm	HP	Watts							
6.2	380	42.8	1/6	121 / 129	180	0.85 / 0.87	1.6 / 1.0	280	200	42A5BEPM-GB	N1366
9	358	40.4						190			N1364
14.4	250	28.3						120			N1362
28.8	150	17						60			N1360



Type 42A-GB

Metric Motors Without Gearing

- Die cast terminal box with terminal block included with 34R and 42R motors
- See page 34 for capacitors and terminal boxes

up to 140 Watts | Fixed Speed AC Induction Motors—Metric

AC

Speed (rpm)	Rated Torque (oz-in.) (Nm)		Power (HP) (Watts)		Rated Voltage	Frequency (Hz)	Ph	Current (Amps)	Radial Load (lbs.)	Capacitor (µF/VAC)	Product Type	Model Number	
CAPACITOR IS REQUIRED													
KCI-26	1250	3	0.02	1/300	2.8	230	50	1	0.06	5.7	0.4/440	KCI-26	N1713
CAPACITOR IS REQUIRED													
30R	2850	9	0.06	1/39	19	230	50	1	0.38	18	1.3/440	30R2BECI	N1319
	1400	18	0.13	1/41	18				0.21				N1340
CAPACITOR IS REQUIRED													
34R	1400	97	0.69	1/7.5	100	230/400	50	3	.78/.45	42	No Capacitor	34R6BFPP	N1295
	1400	72	0.51	1/10	75	230		1	0.6		7.5/370	34R6BFCI	N1291
CAPACITOR IS REQUIRED													
42R	1400	135	0.95	1/5	140	230/400	50	3	1.1/0.61	50	No Capacitor	42R5BFPP	N1273
	1400	97	0.68	1/7.5	100	230		1	0.78		7.5/370	42R5BFCI	N1358



up to 200 Watts | Permanent Magnet DC Motors—Metric

DC

Speed (rpm)	Rated Torque		Power		Rated Voltage	FF	Current (Amps)	Radial Load (lbs.)	Product Type	Model Number
	(oz-in.)	(Nm)	(HP)	(Watts)						
33A (Face Mount, Base Optional)										
1725	25	0.18	1/23	32	180	1.6 / 1.0	0.31	55	33A3BEPM	N6216
1725	55	0.39	1/11	70			0.62		33A5BEPM	N6227
1725	95	0.67	1/6	121			0.88		33A7BEPM	N6237
3000	55	0.39	1/6	122			0.89		33A5BEPM	N6230
3000	80	0.57	1/4	178			1.3		33A7BEPM	N6231
42A (Face or Base Mount, Base Installed)										
1725	95	0.68	1/6	121	180	1.6 / 1.0	0.85	90	42A5BEPM	N4227
3000	70	0.49	1/5	155			1.17		42A5BEPM	N4230
1725	120	0.85	1/5	153			1		42A7BEPM	N4237
3000	90	0.63	1/4	200			1.5		42A7BEPM	N4231



"N" model numbers require lead time and minimum quantities.

Shaft kits for type 3F/H, 5L/H and GB/H gearmotors



Cover kits type 3F/H (left), types 5L/H and GB/H (right)



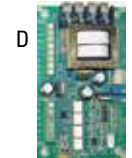
Flange mount kits type 3F/H (left), types 5L/H and GB/H (right)

Item	Model No.	Description
—	0910	Shaft kit for type 3F/H gearmotors, 1/2 inch diameter, single shaft
—	0920	Shaft kit for type 3F/H gearmotors, 1/2 inch diameter, double shaft
—	0912	Shaft kit for type 5L/H gearmotors, 5/8 inch diameter, single shaft
—	0922	Shaft kit for type 5L/H gearmotors, 5/8 inch diameter, double shaft
—	0917	Shaft kit for type GB/H gearmotors, 3/4 inch diameter, single shaft
—	0927	Shaft kit for type GB/H gearmotors, 3/4 inch diameter, double shaft
—	0950	Cover kit for type 3F/H gearmotors
—	0951	Cover kit for type 5L/H and GB/H gearmotors
—	0955	Flange mount kit for 3F/H gearmotors
—	0956	Flange mount kit for 5L/H and GB/H gearmotors

Control Accessories

BLDC
PMDC

Item	Model No.	Description
—	0888	Analog Interface Board for use with model 0810, 0830, and 0850 controls. Allows control to accept a variable voltage or current signal from user's host controller to automatically control motor speed. Inputs are optically isolated.
—	0890	Electronic Direction and Braking Board, F-B-R Kit , for use with model 0810, 0830, and 0850 controls. Allows user to change motor direction and to dynamically brake motor to a quick stop. Inputs are not optically isolated. This kit includes one F-B-R board, one cable and connector, mounting hardware, and two additional braking resistors.
—	0893	Local/Remote Switch for use with model 0810, 0830, and 0850 controls when used with accessory model 0888. Allows user to switch between automatic and manual operation.
—	0895	Switch Sealing Kit upgrades NEMA-12 brushless DC and PMDC enclosed controls to IP-44 rating.
A	3981	Cable Kit for stock 34B/FV INTEGRAMotors. Length: six feet (3 cables: power, logic and encoder).
B	3982	Extension Cable for model 3910, 3911, 3921 and 3912 controls. Extends the cable between the motor and control by six feet. Both ends are equipped with circular connections for easy connection between model 3983 cable assembly or encased control and the motor. Length: six feet.
C	3983	Connection Cable Assembly for connecting model 3910, 3921 and 3911 chassis controls to stock 130 V motors. One end of the cable is equipped with a circular connector, the other end is equipped with quick disconnects for phase leads, and a molded connector for the commutation leads. Length: 6 feet.
D	3984	Analog Interface And Isolation Module for model 3910, 3911, 3921 and 3912 controls. Provides Analog interface and isolates controls from system controller input signals which may be at different potentials.
—	43300260	Speed Potentiometer Kit for use with FPM controls. Contains 10k Ohm potentiometer, hardware, wire and connector for manually regulating motor speed.
—	43300270	Fuse and Speed Potentiometer Kit for use with model 3910 control. Contains potentiometer for manually regulating motor speed and various fuses to cover the range of motors and gearmotors which can be used with the control.



Metric Accessories



Metric "L" Brackets

Item	Model No.	Description
A	0990	Metric Kit for 24A
B	1968	Metric Kit for 33A motors, and type D and Z gearmotors
C	1970	Metric Kit for type W gearmotors
D	1969	Metric Kit for E, F and FX gearmotors (will not fit 48R-F or 48R-FX)
—	—	no "L" bracket kits are available for 34R and 34R-Z gearmotors

A



B



Metric Motor and Gearmotor Kits

Item	Model No.	Description
A	1982	Metric die cast terminal box kit for 30R motors and gearmotors
A	1984	Metric die cast terminal kit with terminal block for 33A, 34R, 42A and 42R motors and gearmotors. For 90/130, 130V and 180VDC models only.
B	0991	Metric die cast base kit for 42A motors and gearmotors
—	0992	Metric adaptor plate for 33A and 42A motors and gearmotors

Standard products for demanding applications



Hollow Shaft Gearmotors and Accessories

Hollow shaft gearmotors connect directly to the driven load, reducing the overall space required by the gearmotor. Get the flexibility of Bodine's hollow shaft gearmotors without expensive couplings and mounting hardware.

- Rated torques: 6.8 to 380 lb-in
- Gear ratios: 5:1 to 280:1
- Single- or double-output stainless steel shaft kits
- Face-mounting flanges
- 230VAC and 230/460VAC 3-phase models available



Speed Controls for Fractional Horsepower Gearmotors

Bodine filtered and unfiltered speed controls provide optimized performance for a wide range of gearmotors and motors. Match a Bodine gearmotor and control and get an extended two-year system warranty. Chassis and enclosed models are available.

- PMDC, brushless DC, and AC motor speed controls
- Various input and output voltages (AC or DC)



bodine-electric.com

201 Northfield Road
Northfield, IL 60093
U.S.A.
Tel: 773.478.3515
Fax: 773.478.3232
Toll Free: 1.800.726.3463
www.bodine-electric.com
info@bodine-electric.com

Presented by:

